



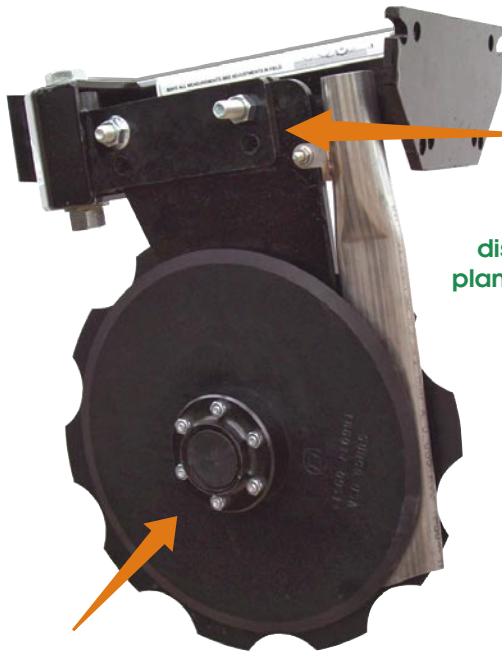
Turning Design Into Quality Products
www.suncomarketing.com



Your Solution For Accurate Dry Fertilizer Placement

Easily mounts to row units on
John Deere, **Kinze**, **White**
and **Case-IH** planters

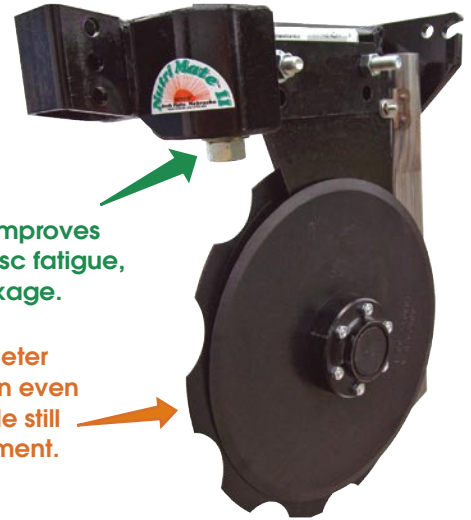
Because NutriMate II is mounted to the row unit, the planter parallel links let it float and the unit gauge wheels provide depth control so nutrients are precisely placed in relation to the seed.



Can easily be adjusted for both
depth of fertilizer placement and
distance from seed.

Sunco's unique design allows
discs to be pulled thru the field which improves
planter tracking, reduces bearing and disc fatigue,
plus eliminates stress on parallel linkage.

Notched disc leads smaller diameter
smooth disc to allow soil penetration even
in the highest trash conditions while still
forming groove for fertilizer placement.



Bolt on blades, standard equipment

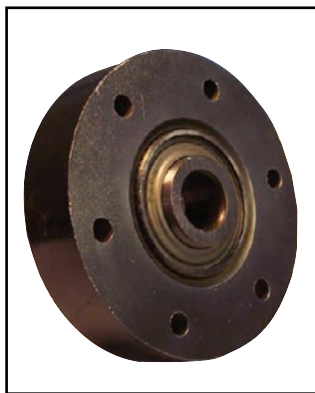
◆ A unit developed to precisely
place fertilizer in correct
proximity to seed, reduce
germination problems and
encourage rapid plant growth

◆ Works well in all farming
operations including
conventional, no-till, strip-till
and minimum-till

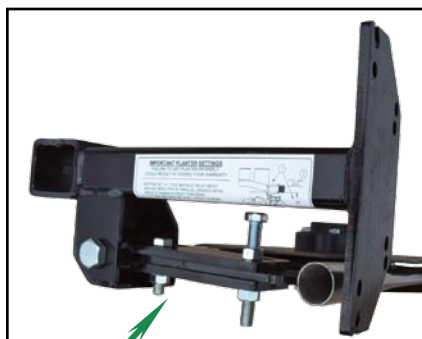
The Time to Apply Nitrogen is When You Plant



Exclusive features put **Nutri Mate II™** in a class by itself!



Heavy duty hub and bearing provide for dependable, long-lasting service.



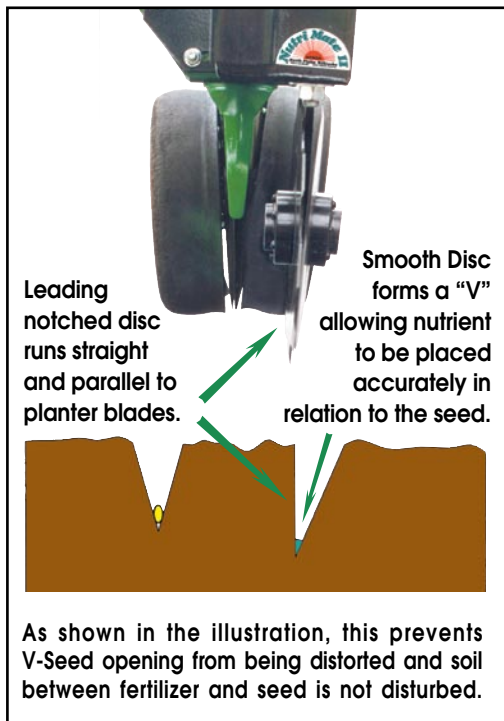
Fertilizer Placement

Distance

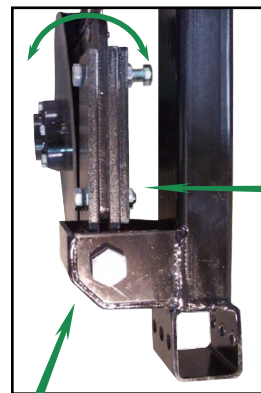
- 2" from seed
- 2 3/4" from seed
- 3 1/2" from seed

Depth Adjustments

- 1/2" above seed
- *1/2" below seed



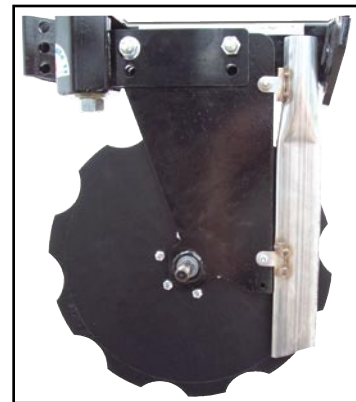
Nutri Mate II™ will not only supply plants with starter fertilizer for immediate and vigorous emergence, but adequate amounts of nutrient can be applied to sustain plants during their yield-producing growth.



Discs are pulled and not pushed - improving performance.

Exclusive maintenance-free 10° pivot

allows Nutri Mate II™ to flex independently of the planter row unit.

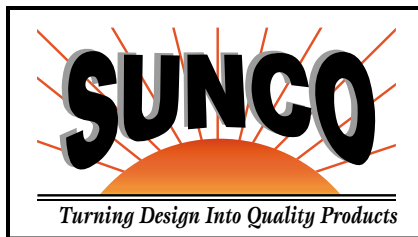


(smooth disc removed)

- ◆ The 1.5 inch stainless steel delivery tube places fertilizer in the bottom of the soil opening
- ◆ Narrow double disc design reduces the amount of soil disturbed

Specifications and Standard Equipment

- Weight - 45 lbs.
- Distance from face plate - 16" w/Sunco Saber Tooth Row Cleaner - 23"
- Disc size: 13.5" Notched
- 12" Smooth
- Bolt on hub-blade assemblies
- Saber Tooth receiver tube



Sunco Marketing

www.suncomarketing.com

P.O. Box 1068
North Platte, NE 69103
(308) 532-2146

(Specifications and Design Subject to Change Without Notice)

See Your Local
Sunco Nutri Mate II™ Dealer